



WELCOME TO WINGROVE
PRIMARY SCHOOL
PROSPECTUS



HEADTEACHER'S WELCOME

Occupying a key position in the west of Newcastle, we reflect the rich cultural and social mix present in our area of the city. Our school accommodation is a large, modern building with generous, natural, outdoor space and extensive sports areas. The immediate surroundings and wider community benefit all our children as they study the National Curriculum.

Our logo is an excellent representation of our school community: a world for many varied people working together. Everyone is welcome here.

We are all extremely proud of our school and committed to providing the very best possible education for all of our children. Parents tell us their children feel safe, and learn within a happy, stimulating and attractive environment. Each child is encouraged to discover the joy of learning and develop a lively and enquiring mind. This strong ethos is recognised by many visitors.

Wingrove Primary School accommodates 472 children. Beginning in the Nursery, we offer part-time (morning or afternoon) places to 52 children. We have 60 children in each year group from reception to Year 6. Our school is also the daily work place of some 55 teaching, learning support and facilities management staff. The team is supplemented, on a needs-led basis, by various visiting professionals and specialists.

“ A warm welcome awaits everyone who enters Wingrove. Pupils are friendly and display a high level of care and respect towards each other, adults and visitors.

OFSTED 2016

”

At Wingrove, we expect children to develop the abilities to question, to discuss rationally, to apply themselves to challenging tasks and to develop the necessary skills and knowledge for finding creative and practical solutions, reaching their full potential in all aspects of school life.

We believe that children's academic success flourishes on strong partnerships between home and school. We, along with our fully committed governing body, work carefully with our school community to ensure that we are providing the best possible education for all of our children.

Parents and carers are regularly welcomed into school, to visit classrooms, attend special assemblies and events, participate in meetings and courses, to work alongside children and accompany them on visits into the wider community.

We also appreciate active participation through our groups, meetings and drop-ins or by specific appointment. From time to time we also invite comment and suggestions via completion of surveys and questionnaires.

Please visit www.wingrove.newcastle.sch.uk and if you would like further information, please contact us through the school office.

We would be delighted to welcome you.

Mrs. Jane Mullarkey
Head Teacher, Wingrove Primary School



OUR AIM

At Wingrove we aim to create and maintain a positive and happy atmosphere which is underpinned by high, yet achievable, standards and expectations in both the work and conduct of us all.



We aim to:

- Care and share
- Communicate and motivate
- Challenge and support

so that each child may develop his/her knowledge and skills, academically and personally, to the full potential. In this way we provide a firm foundation for life-long learning and future success.



This is Salma, our school mascot. She was designed and named by the children. Her name means 'safe' and this is important to us as we want everyone to feel safe when they join our Wingrove family.

She represents difference and reflects the sixth of our Seven Golden Promises which states: 'We welcome difference and promote lasting friendships.' Everyone is welcome here.

OUR RULES



All our school rules - in the classroom and around the school - are based on Seven Golden Promises:

- We treat people and all living things with care and understanding;
- We keep our hands and feet to ourselves;
- We speak with kindness, as calling names can hurt or upset others;
- We take good care of our own belongings and those of others;
- We look after our school and its equipment to keep it clean, tidy and safe;
- We welcome difference and promote lasting friendships;
- We can stand up in support of someone who needs a friend.

The words we use to express these are chosen to suit the ages of our children and change slightly as the children grow older and become more responsible and self dependent.

OUR SCHOOL DAY



Good time keeping is essential. The school day always begins promptly.

Doors open following the **08:45** buzzer and the gates are closed following the **08:55** buzzer.

Any children who arrive after **08:55** must report to the school office.

Parents of younger children see the teacher at the beginning and end of the day. Teachers of older children are available at the end of each school day.

Reasons for any absence should be telephoned to the School Office (press option 1 for absence line) or written in a letter to the class teacher.



NURSERY

Doors open from 08:40.

The morning session begins at 08:45.
The morning session ends at 11:45.

Doors open from 12:25.

The afternoon session begins at 12:30.
The afternoon session ends at 15:30.

RECEPTION, KEY STAGE ONE AND KEY STAGE TWO

Doors open from 08:45.

The morning session begins at 08:55.
The morning session ends at 12:00.

Afternoon school begins at 13:00.
The school day ends at 15:15.

“ Pupils’ behaviour and attitudes are stunning. There is an almost tangible sense of community and belonging. ”

OFSTED 2016

OUR SCHOOL UNIFORM AND DRESS CODE

Wingrove has a uniform policy which we trust everyone will support.

UNIFORM

Dark grey or black trousers, pinafore or skirt

White shirt/polo-shirt

Red or blue sweatshirt/cardigan with school logo

Headscarves if worn should be shoulder length in black, red or blue

Black shoes or boots

Plain black, grey or white socks or tights in grey, navy or black

Summer

Dark grey shorts

Blue/red gingham dress

Sweatshirts, cardigans and other items with our school logo on can be ordered from the school office.

Please label ALL clothing, including coats.

CLOTHING FOR P.E.

All children participate in P.E. lessons unless a sound medical reason is provided by a medical professional.

The children will need a Wingrove T-shirt (available from the school office), black tracksuit bottoms, leggings or shorts, and black plimsolls (indoor P.E.) and trainers (outdoor P.E.). Children may also bring a black tracksuit top or sweatshirt for outdoor lessons. Hoodies can be bought from the school office. They are embroidered with names which is paid for by the school.

JEWELLERY

We do not encourage the wearing of jewellery and cannot accept any responsibility for it in school.

If earrings are worn they must be small studs.

All jewellery MUST be removed for P.E.



THE SCHOOL CURRICULUM

Our school curriculum is based on the Early Years Foundation Stage Curriculum and the National Curriculum. Children follow programmes of study according to their age and stage of development. We also have Forest School sessions each week for all children. These are led by our fully trained school staff.

CORE SUBJECTS

English (reading & writing), Mathematics and Science.

FOUNDATION SUBJECTS

Art & Design, Computing, Design and Technology, Ancient & Modern Foreign Languages (MFL-KS2), Geography, History, R.E., Music (including singing and dancing) & P.E. (including swimming).

ADDITIONAL SUBJECTS

Personal, Social and Health Education (PSHE). Spiritual, Moral, Social, Cultural Education (SMSC) and forest school.

Learning throughout the curriculum is enhanced through the use of computing, the outdoor environment, visits into the wider community and visitors coming in to school. Children are challenged to perform at their best and attain as highly as possible.

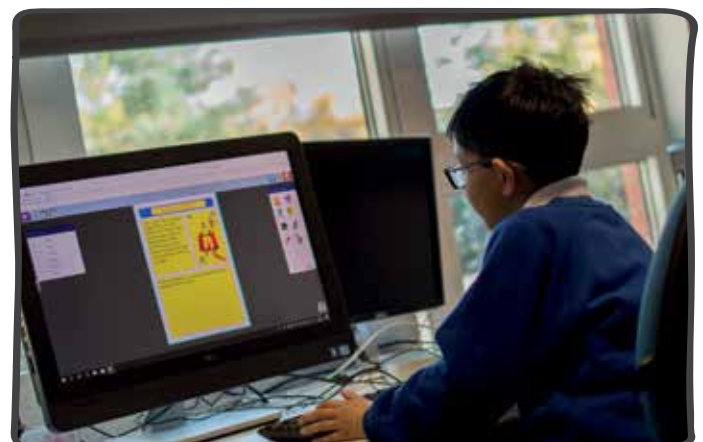
Homework is given on a regular basis and we ask that you support your child to complete and hand it in on time. Sometimes it is presented as a project to be completed over a number of weeks. All children are expected to practise reading and times tables each evening. They will also receive weekly spellings to learn as part of the national curriculum.



ADDITIONAL ACTIVITIES

Breakfast Club is available from 08:00 every school day. A nominal charge is made - please enquire at the school office.

Throughout the year, a range of after-school activities is offered. These include English & maths-based clubs, P.E. and sport, music and singing, dance and drama, art and craft activities. Some activities are short-term, whilst others continue throughout the school year.



IMPORTANT POLICY INFORMATION

CHARGES

No charges are made for books, materials or equipment.

The school may charge for the following activities:

- Individual tuition on a musical instrument
- Optional extras – activities that take place outside school hours
- Educational visits

Pupils in receipt of free school meals (FSM) will be entitled to 50 % discount for all educational visits. Pupil Premium is awarded to school to support this.

Parents may be asked to pay for the cost of replacement or repair where damage is deemed to be the pupil's misuse of the resources.

As our school is part of a Private Finance Initiative, the building is owned by Focus Education, any building damage will result in billing from them.

PARENTS & COMMUNITY

We regularly enjoy visits to people and places in the local community and invite visitors to share experiences with us.

As parents and carers of Wingrove children we welcome you to:

- Talk to staff and attend the parents' evenings and open days
- Join a course or class organised by our Family and Community team
- Come to a special event
- Attend a class assembly
- Assist in school or on educational visits
- Help with fund-raising for charity, disaster relief or special extras for the children
- Give us your views and suggestions through surveys and questionnaires or in person



ATTENDANCE EVERY DAY COUNTS

When it is necessary for your child to be absent from school because of personal illness, you are asked to telephone the school to let us know - if possible on the first day. If you cannot telephone then a written note should be sent when the child returns to school. Please inform the office in advance of any medical appointments. Evidence of these may be required. We encourage all parents and carers to make all non-urgent medical appointments outside the school day.

We do not authorise the taking of holidays during school time.

IMPORTANT POLICY INFORMATION

COMMUNICATIONS

We aim to keep you fully informed.

You will receive:

- Termly newsletters of whole school events and activities
- Termly information sheets stating what your child will learn
- Invitations to parents' evenings or open days (termly)
- Letters about specific events and activities
- Invitations to give us your views and opinions
- Text Messages to update you
- Twitter/Tapestry/Dojo/Seesaw notifications

You will see: Notices and posters.

You can visit: The school in person or on our website www.wingrove.newcastle.sch.uk or follow us on Twitter or give your views at <http://parentview.ofsted.gov.uk>

ACCESS FOR ALL

Equality of access and opportunity is written into all our policies.

Individuals within Wingrove's rich cultural and social population are supported, according to their need, by our Special Educational Needs team, our English as an Additional Language team, and by a variety of partner professionals offering specific expertise.

We work with health professionals and families to devise and operate specific Care Plans.

Our site and building are fully accessible to children and adults who have physical disabilities. The building is equipped with accessible facilities.

ADMISSIONS

As a Local Authority primary school, we comply fully with the admissions policy of Newcastle City Council. For more details, please talk to one of our office staff or contact Newcastle City Council.

COMPLAINTS

If you are concerned about any aspect of school life, please talk to a member of staff as soon as possible so that we may work together to resolve the issue.

A copy of our Complaints Procedure is available on request from the school office or from Newcastle City Council.



“Pupils are safe. They are prepared well for life in modern Britain because of the school's values and the way the diverse faiths and cultures of pupils are embraced and celebrated. Such work contributes to pupils' extremely strong spiritual, moral, social and cultural development.”

OFSTED 2016

