

# Wingrove Primary School

## What we are covering this term:

### Topics:

This half term our topic is 'What makes us special?' We are celebrating differences and looking at what makes us unique. Next half term our topic is 'Is there magic in the forest?'

### Literacy:

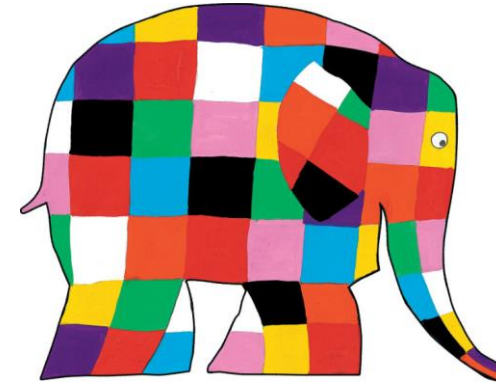
- Ask questions to extend knowledge and understanding
- Composing sentences orally before writing them
- Write a series of sentences with a capital letter, finger space and a full stop
- Read tricky words
- Read words phonetically
- Form letters correctly and sitting letters on the line
- Develop their comprehension of what they have read and predicting what may happen next
- Writing non-chronological reports

### Numeracy:

- Reading, writing and ordering numbers to 20
- Addition and subtraction within 20
- Place value with numbers within 50
- Counting in 2, 5 and 10's
- Measuring length and height
- Measuring volume and weight

### Science:

- Labelling the human body
- Naming the five senses
- Testing whether materials are waterproof
- Seasonal changes and plant growth
- Classifying animals



## Term Dates

Tuesday 4<sup>th</sup> January – Friday 18<sup>th</sup> February  
Monday 28<sup>th</sup> February – Friday 8<sup>th</sup> April

## Training Days

Tuesday 4<sup>th</sup> January & Friday 8<sup>th</sup> April

# Spring Term Year One

## Welcome to Year 1

The members of our teaching team are:

**Phase Leader:** Mr Hields

**Class Teachers:** Mrs Jobson  
Miss Bainbridge

**Support Staff:** Mrs Robson  
Mrs Walker

## Organisation

- Doors open at **8:35am** and close at **8:55am**.
- Late arrivals must report to the office.
- **Lunch time** is from **12:00pm** until **1:00pm**
- **Home time** is at **3:15pm** when children are collected from the classroom.

P.E and forest school Day is **Friday**. Children need to come in wearing their red P.E t-shirt, black jogging bottoms and a hoody. They also need to wear suitable footwear e.g. trainers

**Children should not wear jewellery including earrings.**

All children need a pair of wellies which are to be kept in school to wear when going to forest school.  
Please encourage your child to be independent when dressing and undressing at home to help them when in school.

This term we are transitioning from Dojo to **Seesaw**. Please can parent's login to your account and check for notices daily. This will help you keep updated on the learning in class and see any important reminders. We will also be posting homework on Seesaw. Any problems logging in, please let us know. .

## Homework

Children should bring their reading folders into school **every day**. Please ensure their reading book and reading record are in the folder so we can change your child's book. Please practise reading with your child a little every day as this will really help them develop their confidence and fluency in reading.

The children have access to the **Mathletics** and **Active Learn** websites which are great fun and will support their learning. Please support your child by helping them to log on to these programs and please see class teachers if you need support with passwords.

## Phonics screening

The children will be completing the phonics screening check during June. We hope to arrange a meeting with you in March to provide more information about the screening check, depending on the latest Covid-19 restrictions. We will send more details out nearer the time.  
If you have any questions or concerns, please do not hesitate to talk to us.