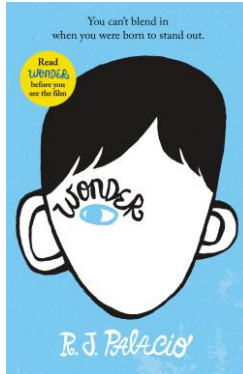


What we are covering this term:

English: non-chronological reports; play scripts; recounts; modern fiction; poetry and books from our Literary Heritage. Our novel this term is 'Wonder' by R.J. Palacio.



Maths: place value; addition; subtraction; multiplication; and division methods.

Science: Earth and Space; materials and their properties.

Creative Curriculum: our foundation subjects will be interwoven into our topic question: '**Does adversity make us stronger?**' and will include studying natural disasters (earthquakes and volcanic eruptions) as well as the Titanic disaster.

Additional Info

If you have any questions or concerns please do not hesitate to talk to us or make an appointment at the office.

To contact us by telephone: 0191 2735466 / 0191 2735842
To contact us by email: admin@wingrove.newcastle.sch.uk
Follow us on Twitter at: School - @WingrovePrimary
For more information go to: www.wingrove.newcastle.sch.uk

Wingrove Primary School

Welcome
To
Year 5

2022/2023

Term Dates: 05.09.22 – 23.12.22

Half-term: 24.10.22– 28.10.22

Staff training days: 05.09.22, 06.09.22

Trips: tbc

Christmas Performance: 16.12.22 am

Welcome to Year 5

The members of our teaching team are:

Phase Leader: Ms West

Class teachers: Ms Sweet
Miss Bainbridge

Support staff: Mrs Withycombe
Mrs Mirza

Organisation

- Doors open at **8:45am** and close at **8:55am**.
- Late arrivals must report to the office.
- **Lunch time** is from **12:00pm** until **1:00pm**
- **Home time** is at **3:15pm**

Uniform – All children are expected to wear:

- a white shirt or polo shirt
- dark grey or black trousers or skirt
- plain grey, black or white socks
- if worn, tights should be plain navy, grey or black
- a red or blue sweatshirt (purchase from the school office)
- black school shoes (not trainers)
- if worn, headscarves should be no longer than shoulder length, be plain and be black, blue or red.

Children should not wear jewellery

P.E. and Forest School is on a **Thursday**.

Children need to come to school in their red school P.E. t-shirt, black shorts or leggings, either a school hoodie or a plain black hoodie, and trainers from home. Tracksuits can be worn in colder weather.

New P.E. t-shirts can be bought from the office for £4.50, hoodies are £11.00. All children need a named pair of wellies which we will keep in school to use for forest school.

Classroom Rules

- Keep hands, feet and objects to yourself
- Respect everyone and everything
- Listen to the speaker without interrupting
- Do not stop others from working
- Always follow instructions from members of staff

Homework

Your child will be given homework every week.

It is important for their learning that it is completed every week online. We are still continuing to use Seesaw as our main learning platform.

Homework may include English, Maths or Creative Curriculum based work.

Spellings: On Seesaw

Reading: Children will be expected to have their reading folder in school each day

Clubs

Club letters will be sent out separately.

Information will also available in the school entrance hall and on the school website.